



www.locstar.com

SMART LOCK USER MANUAL



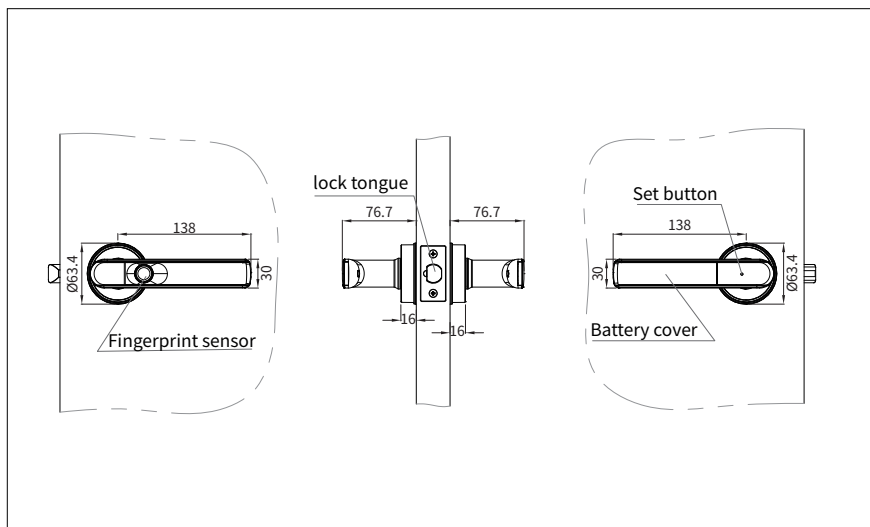
Rev:220609

The final interpretation of this manual belongs to
Shenzhen Locstar Technology Co., LTD

1.1 Product technical parameters

Operating voltage	4 x 7 batteries
Power consumption	Static current: $\leq 10\mu\text{A}$, average current: $\leq 150\text{mA}$
Working environment	operating temperature: $-20\sim 50^{\circ}\text{C}$, operating humidity: 15%~90%RH
Battery life	about 10 months (based on 10 times per day)
Alarm voltage	4.8V
Emergency power supply	dc 5V(Micro USB interface)
Fingerprint capacity	20
Fingerprint identification speed	$\leq 0.3\text{s}$
Fingerprint resolution	508DPI
Error rate	$\leq 0.004\%$
Rejection rate	$\leq 0.1\%$
Fingerprint collector	round appearance, large area sensor
Startup time after reset	< 500ms
Human guidance	red, blue and green light, optional buzzer

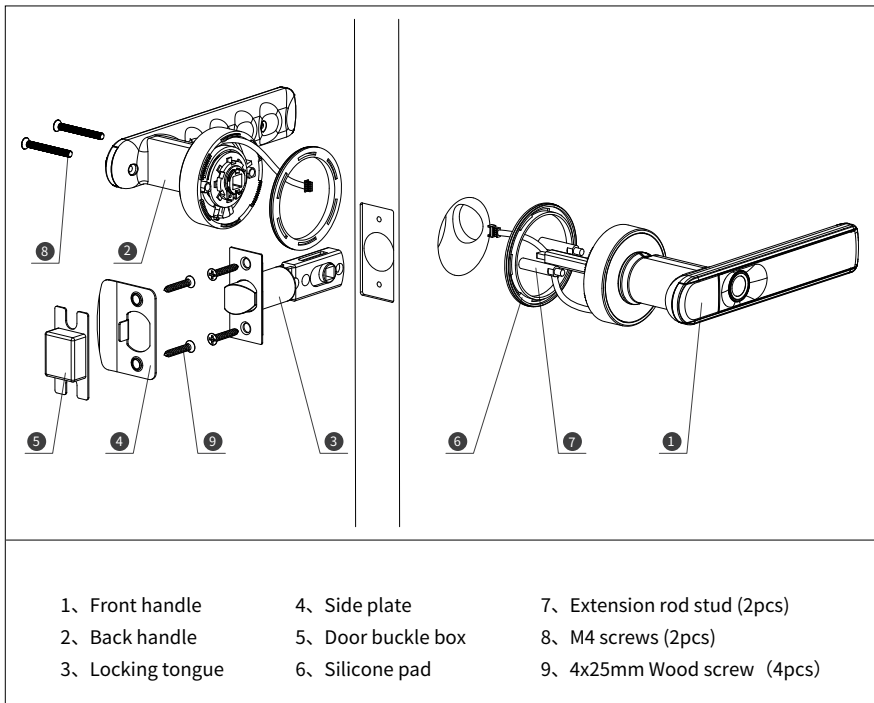
1.2 Product Picture



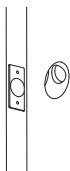
2.1 Product list

Serial No.	Name	Quantity	Remarks
1	Front handle	1pc	
2	Back handle	1pc	
3	Lock tongue (including side plate, door latch box and Mounting screw)	1pc	
4	Silicone pad	2pcs	
5	Installation kit	1pc	
6	User manual	1pc	
7	Certificate of approval	1pc	
8	Product quality warranty card	1pc	
9	AAA Batteries	4pcs	
10	Mechanical key	2pcs	
11		1pc	

2.2 Installation explosive diagram Product list

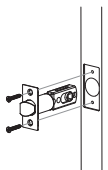


3.1 The door drawing and drilling



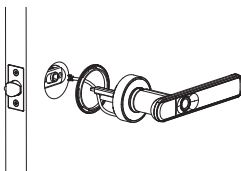
1. Draw a center line on the door according to the installation height specified by the customer. If not specified by the customer, the center line shall be 1 meter from the ground.
2. according to the opening template on the door to draw the opening map.
3. Select the appropriate drill bit for drilling .
4. Carefully correct the mounting hole to the required size.

3.2 Installing lock tongue



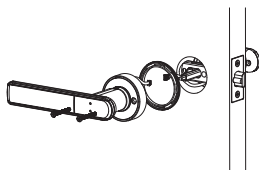
1. Insert the locking tongue into the side hole of the door.
2. Fix it with two 4*25mm wood screws.

3.3 installing front handle



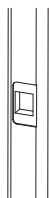
1. Remove the two extension studs from the mounting kit and install them on the front handle seat.
2. Put the silicone pad over the front handle seat.
3. Thread the connector through the door hole to the back of the door.
4. The square shaft and the extension rod stud are inserted into the corresponding hole of the lock tongue.

3.4 installing the back handle



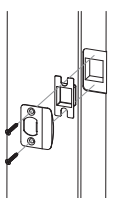
1. Put the silicone pad over the back handle seat.
2. Connect the front and back handle wires.
3. Insert the front handle square shaft into the rear handle square shaft hole.
4. Secure the front and rear handles to the door with two M4 screws. When installing the screws, take proper measures to protect the rear handles to prevent damage to the handles.

3.5 Line the door frame and open the hole



1. Determine the installation position of the door gusset plate according to the position of the door lock, and draw a line on the door frame.
2. Open the hole according to the drawn line and trim carefully to the desired size.

3.6 Installing side Gusset Plates

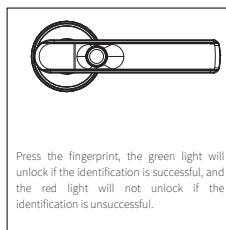


1. Insert the door buckle box into the hole and cover the side gusset plate.
2. Secure the side gusset plate to the door frame using two 4*25mm wood screws.

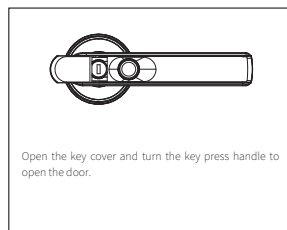
4.1 Passage mode



4.2 Fingerprint Unlocking



4.3 Mechanical key unlocking



Initial state:

Any fingerprint can unlock

Tuya APP download:

Download Tuya Smart APP from google play/App Store, And  installation than registration

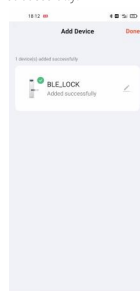
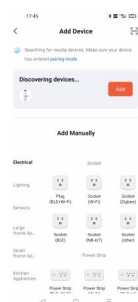
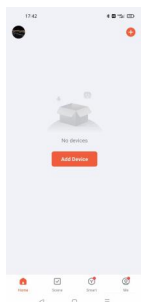
Device match to Tuya APP:

2. Click "Tuya Smart" enter APP, If first use Tuya APP, please click "Add Device", The phone is in automatic search and pairing status.

3. Trigger the fingerprint sensor on the padlock by hand to turn on it.

4. Tuya app will automatically recognize the device, will tips "Discovering devices", click "Add".

5. Click "+" in "Add Device" interface, APP will match automatically. If the match is successful, will tips "Added successfully", then click "Done", the device is matched successfully.

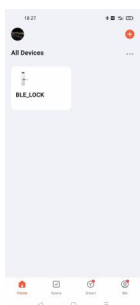


Tips: Before connecting Bluetooth, you need to trigger the fingerprint sensor with your finger to turn on the device. The intermediate dwell time is 10 seconds. If it times out, the device will enter the sleep state again. You need to touch the start device again for the next operation.

Set fingerprint by Tuya APP:

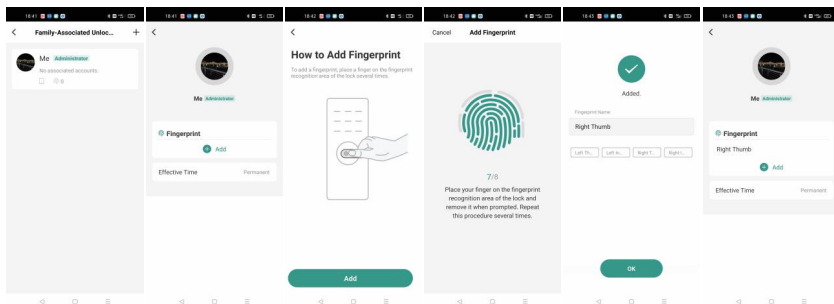
1. Find the corresponding device in the home page (first name is BLE_LOCK), Click it.

2. Enter the device control interface, If the device is connected to the APP, the round button is green, otherwise it is gray (if it is gray, the finger triggers the fingerprint to start, and the automatic connection turns green). Long press "Press" to unlock over the Bluetooth.



Functional operation description

3.Click "Family" to set fingerprint, Set the fingerprint according to the prompt steps. By default, the first setting person is the manager.

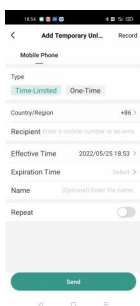


Tips: Each person can set up to 4 fingers, and a total of 20 fingers can be set up.

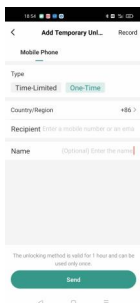
4.After the fingerprint is set successfully, you can unlock it by the authorized finger. If it is not, you can't unlock it.

Set up temporary sharing by APP: Edit device name and remove device by APP:

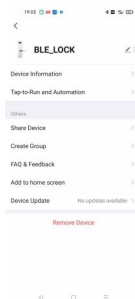
1.In the device control interface, click "Temporary", Select "Time-Limited" or "One-Time".



2.Fill in the options of the authorized person in the corresponding options, and then click "Send". The authorized person must also have a Tuya APP and have been registered. Within the scope of authorization, when Bluetooth is turned on, the authorized person can open the Tuya APP, automatically find the authorized device, enter the device control interface, and press "Press" to open the device.

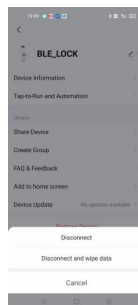


1.In the device control interface, Click the Edit in the upper right corner to enter the edit interface:



2.Click **BLE_CLOCK** to rename the lock and modify the location where the device.

3.Click "Remove Device". If "Disconnect" is selected, the matching between this device and this phone will be removed, but the fingerprint information in the device will still be retained. If "Disconnect and wipe data" is selected, the matching between this device and this phone will be removed, and all user information in the device will be cleared and reset to the factory setting state.



LED indication:

- 1.Press the fingerprint sensor with your finger. If the identification passes, the LED indicates green and the device open. If it fails, the LED indicates red and the device will not open.
- 2.If the power in the device is low, it flashes red again after each press.